



US006675592B2

(12) **United States Patent**
Huang et al.

(10) **Patent No.:** **US 6,675,592 B2**
(45) **Date of Patent:** **Jan. 13, 2004**

(54) **ELECTRONIC CONTROL STRATEGY FOR A/C COMPRESSOR**

(75) Inventors: **Yong Huang**, Ann Arbor, MI (US);
Rodney J. Callahan, Novi, MI (US);
Shane A. Harte, Farmington Hills, MI (US);
Lawrence William Smith, Fort Wayne, IN (US)

(73) Assignee: **Visteon Global Technologies, Inc.**,
Dearborn, MI (US)

(*) Notice: Subject to any disclaimer, the term of this patent is extended or adjusted under 35 U.S.C. 154(b) by 0 days.

(21) Appl. No.: **10/062,946**

(22) Filed: **Feb. 2, 2002**

(65) **Prior Publication Data**

US 2003/0145612 A1 Aug. 7, 2003

(51) **Int. Cl.**⁷ **F25B 49/00**; F25B 1/00

(52) **U.S. Cl.** **62/176.6**; 62/228.3

(58) **Field of Search** 62/176.6, 176.3,
62/228.3, 228.1, 133, 210, 211

(56) **References Cited**

U.S. PATENT DOCUMENTS

- 4,602,484 A * 7/1986 Bendikson 62/158
- 4,841,736 A 6/1989 Suzuki
- 4,852,363 A * 8/1989 Kampf et al. 62/176.6
- 5,191,768 A * 3/1993 Fujii 62/209
- 5,443,374 A 8/1995 Yoshii et al.
- 5,867,996 A 2/1999 Takano et al.
- 5,884,497 A 3/1999 Kishita et al.

- 6,047,557 A * 4/2000 Pham et al. 62/228.5
- 6,185,947 B1 * 2/2001 Pittion et al. 62/176.3
- 6,189,325 B1 * 2/2001 Pittion et al. 62/176.3
- 6,360,550 B2 * 3/2002 Klapp et al. 62/94
- 6,393,852 B2 * 5/2002 Pham et al. 62/228.5
- 6,449,972 B2 * 9/2002 Pham et al. 62/228.3

FOREIGN PATENT DOCUMENTS

JP 06-87678 3/1991

* cited by examiner

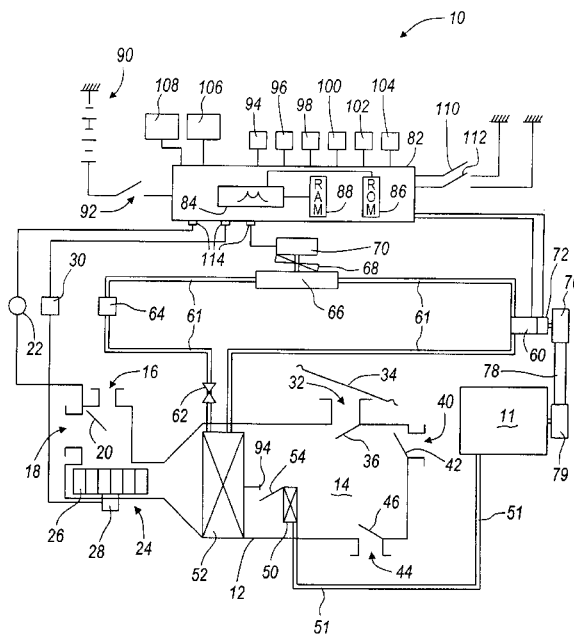
Primary Examiner—Marc Norman

(74) *Attorney, Agent, or Firm*—Brinks Hofer Gilson & Lione

(57) **ABSTRACT**

A method for controlling a vehicle air-conditioning system for cooling an interior of a vehicle is disclosed. The vehicle air conditioning system has a compressor coupled to an electronic control valve. The method includes reading a user manipulatable switch, determining a desired vehicle interior temperature based on the read user manipulatable switch, reading a plurality of sensors indicative of an interior and an exterior climate of the vehicle, determining a heat load on the vehicle air conditioning system, determining a desired evaporator discharge temperature, evaluating a humidity level inside the vehicle by determining a humidity ratio, filtering the updated electronic control valve duty cycle to obtain a new electronic control valve duty cycle based on the desired evaporator discharge temperature, and sending the new electronic control valve duty cycle to a compressor controller, wherein the controller is in communication with the electronic control valve and commands the valve to operate at the new duty cycle.

15 Claims, 5 Drawing Sheets



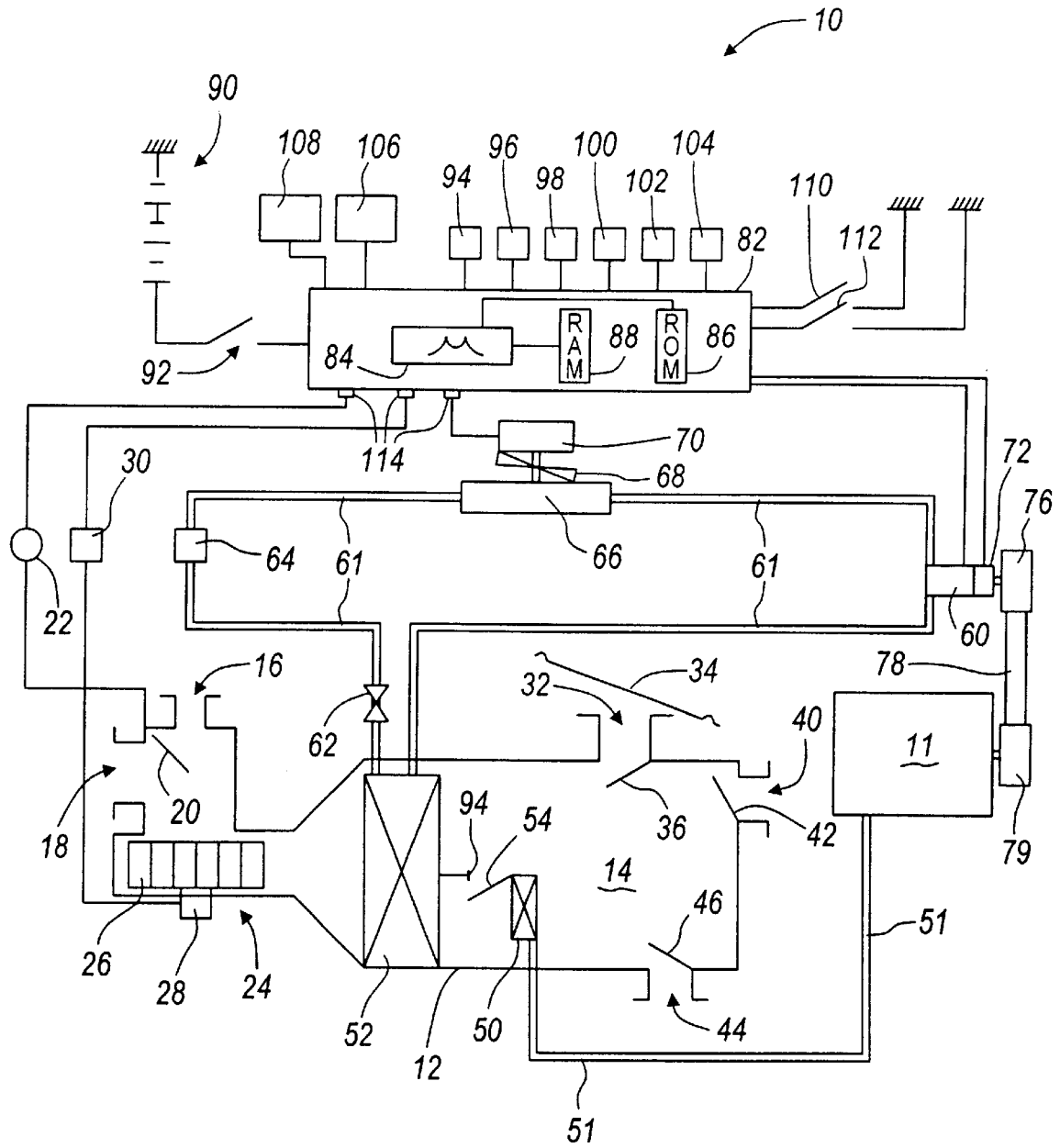


FIGURE - 1

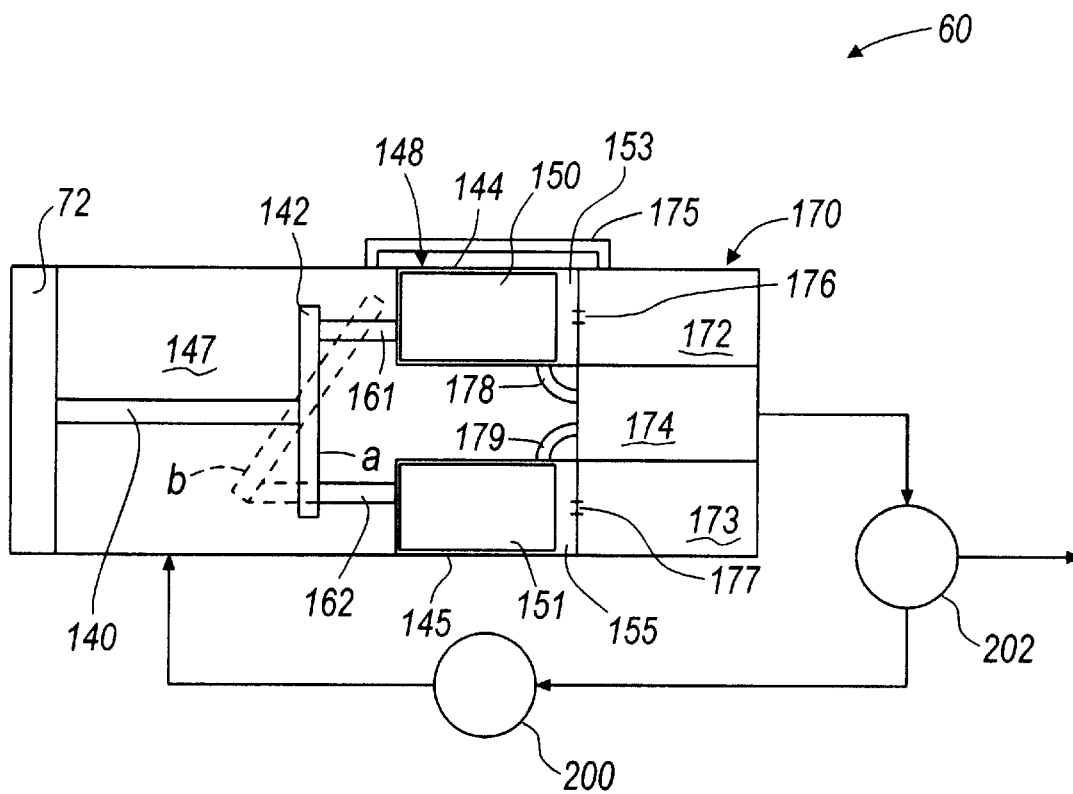


FIGURE - 2

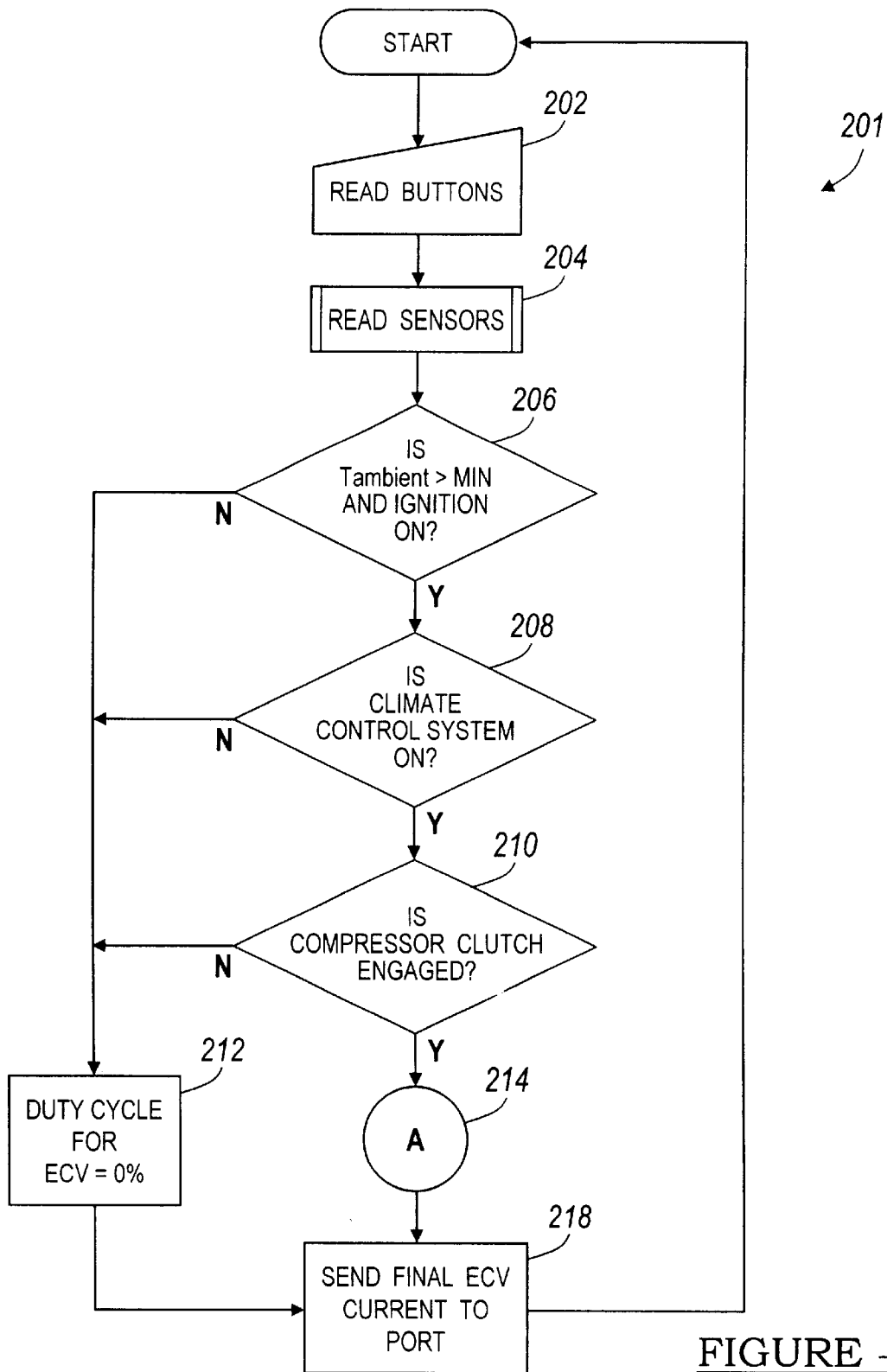


FIGURE - 3

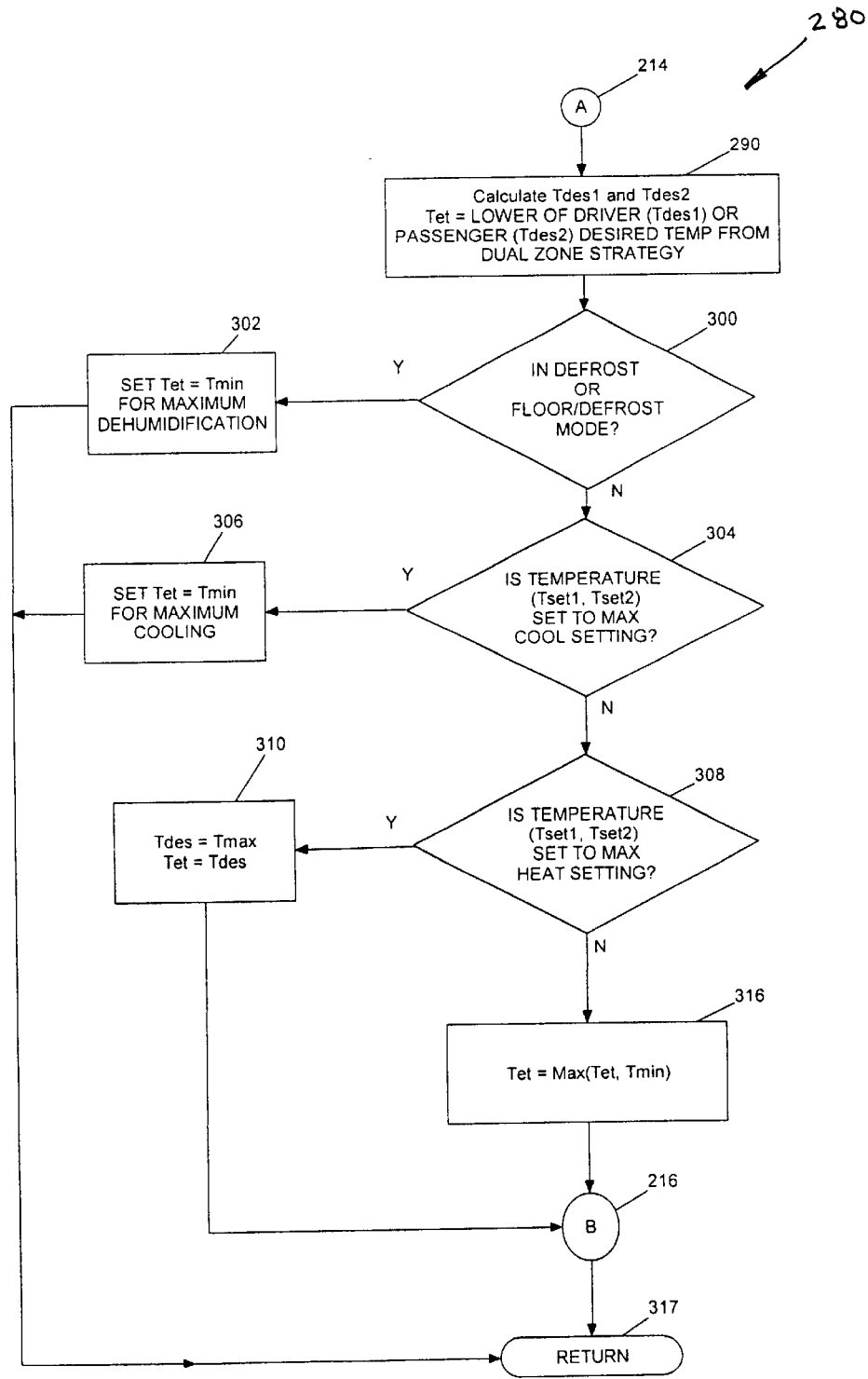


Figure 4

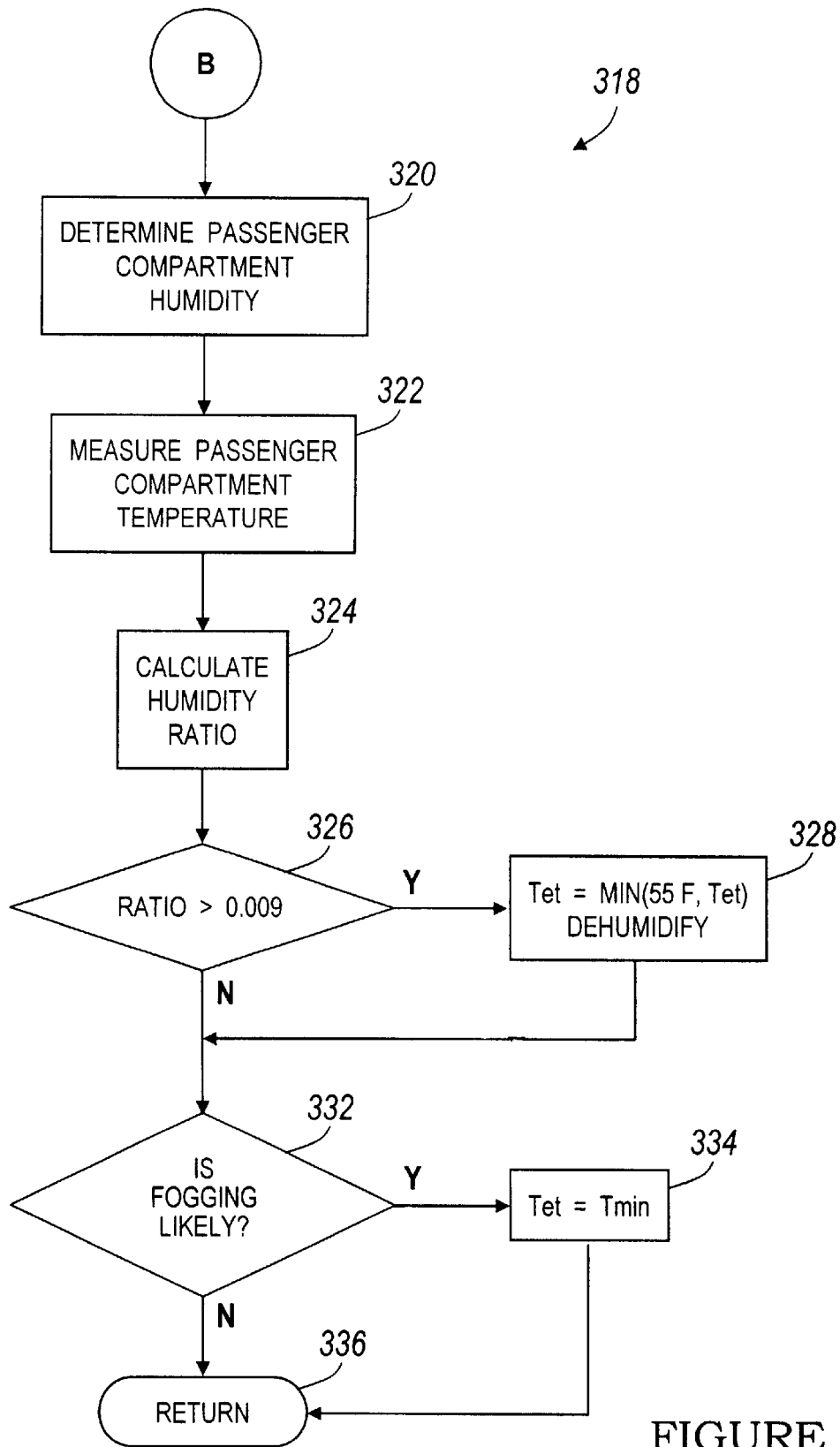


FIGURE - 5

ELECTRONIC CONTROL STRATEGY FOR A/C COMPRESSOR

TECHNICAL FIELD

The present invention relates to systems and methods for controlling the operation of automotive air conditioning compressors, especially variable displacement compressors which may be regulated for optimal operation for a particular engine operating state and environmental condition.

BACKGROUND

Electronically controlled automotive air conditioning compressors are well known in the prior art. Typically, prior art electronically controlled compressor systems include an electronic control module in communication with various sensors for measuring vehicle interior and exterior environmental conditions, switches for actuating various air conditioning system modes, output ports for relaying output signals to actuate various system components, such as vent doors, blower motor, fans, and valves.

These electronically controlled compressors require a control strategy to optimize system operation. Without a control strategy capable of optimizing the performance of the air conditioning system, there is little justification for electronically controlling the compressor as compared to mechanically controlling the compressor. Generally, electronically controlled compressor systems weigh more, are more expensive, and require more sensors than their mechanical counterpart.

However, with optimum control of the electronically controlled compressor systems, the inefficiencies of mechanically controlled compressors, that are operated at lower evaporator temperatures than otherwise required (typically around 35 F) may be avoided. Such air conditioning systems having mechanically controlled compressors, thus do more work than is required in the vast majority of operating conditions.

Therefore, what is needed is a new and improved method for controlling electronically controlled automotive air conditioning compressors. The new and improved method must not run the compressor unnecessarily. Moreover, it must not create a passenger compartment environment that is prone to fogging or is too humid.

SUMMARY

A method for controlling a vehicle air-conditioning system for cooling an interior of a vehicle is provided. In an aspect of the present invention the vehicle air conditioning system has a compressor coupled to an electronic control valve. In another aspect of the present invention, the method includes reading a user manipulatable switch, determining a desired vehicle interior temperature based on the read user manipulatable switch, reading a plurality of sensors indicative of an interior and an exterior climate of the vehicle, determining a heat load on the vehicle air conditioning system, determining a desired evaporator discharge temperature, evaluating a humidity level inside the vehicle by determining a humidity ratio, filtering the updated electronic control valve duty cycle to obtain a new electronic control valve duty cycle based on the desired evaporator discharge temperature, and sending the new electronic control valve duty cycle to a compressor controller, wherein the controller is in communication with the electronic control valve and commands the valve to operate at the new duty cycle.

BRIEF DESCRIPTION OF THE FIGURES

FIG. 1 is a schematic diagram of an air conditioning system for an automobile having a variable displacement compressor, in accordance with the present invention;

FIG. 2 is a schematic diagram of a variable displacement compressor that is selectively driven by the engine, in accordance with the present invention; and

FIGS. 3–5 are a flowcharts illustrating a method for controlling the variable displacement compressor, in accordance with the present invention.

DETAILED DESCRIPTION

Referring now to FIG. 1 an automotive air conditioning or climate control system 10 is schematically represented, in accordance with the present invention. System 10 includes an air conditioning duct which defines an air passage 14 for directing conditioned air into a passenger compartment.

Air conditioning duct 12 includes a plurality of inlets and outlets for drawing in outside air and for directing conditioned air into the passenger compartment. For example, the inlets include an outdoor air inlet 16 for drawing in outside air, and an inside air recirculation inlet 18 for recirculating air contained within the passenger compartment. A mode selector door 20 driven by a small motor 22 is provided to allow a passenger to select between an outside intake mode and an inside air recirculation mode.

Further, a blower 24 such as a centrifugal blower is provided within air conditioning duct 12 for producing air flow from the air inlets to the air outlets. Blower 24 further includes a centrifugal fan 26 and a motor 28. Motor 28 is controlled by a motor driver circuit 30.

Air conditioning duct 12 further includes a plurality of air outlets for directing air conditioned air to various parts of the passenger compartment. More specifically, a defroster outlet 32 is provided for directing conditioned air to a vehicle windshield 34. A defroster mode is selected by actuating a defroster door 36. Further, an upper body air outlet 40 is provided for directing conditioned air toward a vehicle occupant's upper body. An upper body selection mode is selected by actuating an upper body air mode door 42. Similarly, a foot air outlet 44 is provided for directing conditioned air towards the feet of vehicle occupants. Preferably, a foot air mode door 46 is provided for selecting a foot air mode.

With continuing reference to FIG. 1, a heater unit 50 having a heater core is provided for heating cold air passing by an evaporator unit 52. Typically, the heater core is supplied with heated cooling water from the engine 11. During the heating cycle of the air conditioning system, the heater unit 50 acts as a heat exchanger using the heater cooling water to heat the cold air passing through the evaporator 52. An air regulator door 54 is provided for regulating the amount of air heated by the heater unit 50.

Evaporator 52 is in fluid communication with a compressor 60. Compressor 60 is preferably a variable displacement compressor, or a fixed displacement compressor or a mechanically controlled compressor, that draws in refrigerant, compresses the refrigerant and discharges the refrigerant. Evaporator 52 is also in communication with an expansion valve 62. Expansion valve 62 expands the liquid refrigerant fed from a receiver 64. Receiver 64 performs vapor liquid separation of the refrigerant fed from a condenser 66. Condenser 66 condenses and liquefies the refrigerant fed from compressor 60 through heat exchange with outdoor air. Condenser 66 is cooled by a cooling fan 68 which is driven by a driver motor 70.

Compressor **60** further includes an electromagnetic clutch **72** that is in communication with a compressor drive pulley **76** for engaging and disengaging a drive belt **78** driven by engine **11**. However, in alternative embodiments of the present invention compressor **60** does not include an electromagnetic clutch and thus is in continuous engagement with engine **11**.

An air-conditioning system control unit **82** (ACU) is further provided for controlling the operation of the air conditioning system in accordance with the present invention. Air-conditioning control unit **82** includes a microprocessor **84**, read only memory (ROM) **86**, and random access memory (RAM) **88** and other conventional computer components. The ACU is supplied power by the vehicle battery **90** when the ignition switch **92** is switched on. A plurality of switches and sensors are in communication with ACU **82** for sending to the ACU electrical signals indicative of air conditioning environmental factors necessary for determining how to optimally air condition the passenger compartment. The sensors include, for example, an indoor air temperature sensor **94** for determining the temperature of the air inside the passenger compartment, an outdoor air temperature sensor **96** for determining the temperature of the outside air, a solar radiation sensor **98** for determining the intensity of the solar radiation incident on the passenger compartment, a post evaporator temperature sensor **100** detects the actual air cooling by the evaporator, a humidity sensor **102** for detecting a relative humidity of air inside the passenger compartment and a rotational speed sensor **104** for detecting rotational speed of engine **11**.

The switches for manual control of the air conditioning system **10** include, for example, a temperature setting switch **106** for setting a desired indoor air temperature to a desired temperature level, an indoor/outdoor air selector switch **108** for selecting outdoor air intake mode or indoor air recirculation mode, an air conditioning on/off switch **110** for turning on and off the air conditioning system, and an automatic mode switch **112** for selecting automatic air conditioning operation. Further, control unit **82** has a plurality of output ports **114** for sending control signals to the various air conditioning system components. For example, control signals are sent to the various vent doors, fan motors, and the variable displacement compressor **60**.

Referring now to FIG. 2, a schematic diagram of variable displacement compressor **60** is shown in greater detail, in accordance with the present invention. Compressor **60** includes a driveshaft **140** that is operatively coupled to an external drive source such as vehicle engine **18** by electromagnetic clutch **72** and to electric motor **20**. A swashplate **142** is rotatably secured to shaft **140** and is pivotable about the driveshaft. A pair of guide arms **161** and **162** are attached to swashplate **142** at a first end and to pistons **150** and **151** at a second end. The engagement between guide arms **161**, **162** and the associated pistons guides the inclination of the swashplate **142** and rotates the swashplate with respect to the driveshaft **140**. Driveshaft **140** and swashplate **142** are positioned within a crankcase chamber **147**. The pressure in crankcase chamber **147** controls the angle of inclination of the swashplate.

Generally, compressor **60** further includes a cylinder housing **148** having cylindrical bores **144** and **145** extending therethrough. Each bore **144** and **145** accommodates one piston **150**, **151**. Each piston and bore define compression chambers **153**, **155**. Alternatively, each piston may be coupled to the swashplate by a pair of shoes (not shown). Rotation of the swashplate is converted into reciprocation of pistons **150**, **151** in bores **144**, **145** by means of the shoes, as well known in the art.

Further, compressor **60** includes a rear housing **170** having a suction chamber **172** and **173** and a discharge chamber **174**. Suction ports **176** and **177** and discharge ports **178** and **179** are also provided at each chamber. A suction valve (not shown) is provided at each suction port for opening and closing the suction port. A discharge valve (not shown) is provided at each discharge port for opening and closing the discharge port. Further, a bypass port or orifice **175** is provided between crankcase chamber **147** and suction chamber **172**.

As each piston **150**, **151** moves from a fully extended position to a fully retracted position refrigerant is drawn into the corresponding suction port from the suction chamber to enter the associated compression chamber. Conversely, when each piston moves from a fully retracted position to a fully extended position, the refrigerant is compressed in compression chambers **153**, **155** and the discharge valve opens allowing refrigerant to flow into discharge chamber **174** through associated discharge ports **178**, **179**. The inclination of swashplate **148** varies in accordance with the difference between the pressure in crankcase chamber **147** and the pressure in compression chambers **153**, **155**. More specifically, the difference between the pressure in crankcase chamber **147** (PC) and the pressure in the suction chambers **172**, **173** (PS) or the pressure difference "PC-PS" determines the inclination of the swashplate. PC is maintained at a pressure value that is higher than the suction pressure PS (PC>PS). An increase in the pressure difference PC-PS decreases the inclination of the swashplate. This shortens the stroke of each piston **150**, **151** and decreases the displacement of compressor **60**. On the other hand, a decrease in pressure difference PC-PS increases the inclination of swashplate **142**. This lengthens the stroke of each piston **150**, **151** and increases the displacement of compressor **60**.

In FIG. 2 swashplate **142** is indicated by solid-lines (a) in a first position (position a). When the swashplate is in position (a) the pistons **150**, **151** do not reciprocate within chambers **153**, **155**. Compressor **60** is at its minimum displacement. As indicated by dashed-lines (b) the swashplate may be disposed in a second position (position b). Position (b) illustrates the maximum angle of inclination the swashplate can achieve. This is also the position in which compressor **60** achieves its maximum displacement. Depending on the pressures in crankcase chamber **147**, suction chamber **172** and discharge chamber **174** the swashplate may be inclined at any angle between position (a) and (b) achieving variable displacement.

An electronic control valve **200** is in communication with the discharge chamber **174**, through a refrigerant/oil separator **202**, and with the crankcase chamber. Electronic control valve **200** regulates the pressure in crankcase chamber **147**, suction chamber **172** and discharge chamber **174**, by selectively opening and closing communication ports connecting the crankcase chamber to the discharge chamber. A control strategy for actuating valve **200** will be described hereinafter.

The electromagnetic control valve **200** serves to regulate the discharge capacity of compressor **60** by changing a set level of suction pressure of the compressor according to a control current supplied by the air conditioning electronic control unit **82**.

In a preferred embodiment of the present invention a control strategy for controlling the operation of electromagnetic control valve **200** is implemented in software, or in hardware or in both software and hardware. For example, control logic for controlling the operation of control valve **200** in one embodiment is stored in the ACU's read only memory **86**.

Referring now to FIG. 3, a variable compressor and valve control strategy 201 is illustrated in flow chart form, in accordance with the present invention. The initial step of the control strategy is to determine the load acting on the AC system. The thermal load is determined by analyzing four elements (1) the fresh air and body leakage air intake load, (2) the convection and conduction losses through the body of the car, (3) the solar gain load through the car, and (4) the thermal inertia which must be overcome to bring the interior temperature of the car down to a desired level. The fresh air and body leakage load is calculated as a function of blower speed, the blend door position, the recirculation door position, and the interior and exterior temperatures. The blower speed and flow rate determines how much of the fresh air is being injected into the vehicle. This control strategy is based on the assumption that if the blower is in recirculation mode, then 20% of the flow is outside air and 80% of the flow is inside air. If the mode doors are set for floor/defrost or defrost, then this strategy assumes that the AC system is set in fresh air mode. The fresh air and body leakage load may be described by the following equation:

$$\dot{Q}_{fresh} = \dot{m}_{blower} \cdot K_{door} \cdot C_{air} \cdot (T_{amb} - T_{set})$$

where:

$$K_{door} = 0.8_{fresh}$$

\dot{m} = mass flow rate of blower

T_{amb} = ambient air temperature

T_{set} = set temperature

The body conductivity losses should be based on actual or simulated test data recorded at 110 F. Body leakage is a function of the inside and outside air temperature difference and the thermal insulation characteristics of the vehicle.

The convection losses through the body of the vehicle are determined first by conducting thermal testing of the vehicle in question to determine the heat absorption rate at a given temperature. Using this data a convection constant (K_{con}) is determined, and the following equation describes the convection load:

$$\dot{Q}_{con} = K_{con} \cdot (T_{amb} - T_{set})$$

where:

$$K_{con} = 0.012 + S_{veh} \cdot \frac{1.0}{110 - 70} - \frac{0.75}{110 - 70}$$

S_{veh} = Speed of Vehicle (km/hr)

The sun load is a function of the measurements from a sun load sensor and also particular characteristics of a given vehicle. Again, vehicle testing would be required to determine the amount of energy a vehicle absorbs under full sun load. The sun load may be described by the following equation:

$$\dot{Q}_{sun} = K_{sun} \cdot T_{sun}$$

where:

$$K_{sun} = 0.67 \text{ m}^2$$

$$1 \text{ kWm}^{-2} \geq T_{sun} \geq 0 \text{ kWm}^{-2}$$

The remaining load determines the thermal inertia load. This load is a function of the interior temperature and the vehicle occupant's desired interior temperature. Desired interior temperature is determined by reading control switches and buttons, as represented by block 202. In an embodiment of the present invention, the compressor is

operated at a maximum capacity until the desired temperature is reached. Preferably, the load is based on the difference between the current interior temperature and the desired temperature. This allows the two temperatures to converge asymptotically and thus avoid overshoot. An acceleration timer can be used to increase the speed of convergence. The thermal inertia load may be described by the following equation:

$$\dot{Q}_{inertia} = K_{acc} \cdot \dot{m}_{blower} \cdot C_{air} \cdot (T_{int} - T_{set})$$

Thus, the total load is calculated by summing the above loads as described by the following equation:

$$\dot{Q}_{tot} = \dot{Q}_{fresh} + \dot{Q}_{con} + \dot{Q}_{sun} + \dot{Q}_{inertia}$$

At block 204, the various system sensors described above are read. Three conditions are checked at blocks 206, 208 and 210. All of these conditions must be met to continue strategy 201. The first condition, represented by block 206 is to determine whether the ambient outside air temperature is greater than a predefined minimum temperature, and whether the vehicle ignition is "on". If the ambient air temperature is greater than the predefined temperature and the ignition is "on", the next condition is checked, at block 208. However, if the ambient temperature is not greater than the predefined minimum temperature and/or the ignition is "off", then control valve 200 is not activated, as represented by block 212. The next condition checked is whether climate control system 10 has been activated, as represented by block 208. If the system is "on", then the third condition is checked, as represented by block 210. If system 10 is not "on", then control valve 200 is not activated, as represented by block 212. At block 210, the strategy determines whether the electromagnetic clutch 72 is engaged. If the clutch is not engaged, then valve 200 is not activated, as represented by block 212. However, if the clutch is engaged then the desired evaporator discharge air temperature is determined, as represented by block 214 and further in FIG. 4.

In FIG. 4, a method 280 for determining the desired evaporator discharge air temperature (T_{et}) is illustrated, in accordance with the present invention. If climate control system 10 has been requested, the system sets the T_{et} to the lower of the driver (T_{des1}) or passenger (T_{des2}) desired temperatures in a dual zone system, at block 290. At block 300, the system determines whether defrost or floor/defrost modes are selected. If defrost or floor/defrost modes are activated, then T_{et} is set for maximum dehumidification. However, if defrost or floor/defrost modes are not activated, then the system determines if the temperature is set to maximum cooling mode, as represented by block 304.

If the temperature is set to maximum cooling, then T_{et} is set for maximum cooling, as represented by block 306. However, if temperature is not set to maximum cooling, the system determines whether the temperature is set for maximum heating, as represented by block 308. If the system determines that the temperature is set to maximum heating, then valve 200 is not activated and T_{et} is set equal to $T_{desired}$, where $T_{desired}$ is equal to the maximum system temperature (T_{max}), as represented by block 310. However, if the temperature is not set to maximum heating, then the system sets T_{et} to the greater of T_{et} and the minimum temperature (T_{min}), as represented by block 316.

The next step, as indicated by block 216, is to evaluate the humidity level in the vehicle and determine what steps are necessary to prevent fogging. With reference to FIG. 5, a method 318 for evaluating the humidity level in the passenger compartment to prevent fogging is illustrated. This is

accomplished by setting a target temperature for air passing through the evaporator and modulating the compressor accordingly to achieve the target temperature. Having calculated the load and knowing the air mass flow rate (\dot{m}) from previous calculations shown above, $T_{desired}$ and T_{et} may be described by the following equation:

$$T_{desired} = T_{ei} - \frac{\dot{Q}_{tot}}{\dot{m}_{blower} \cdot C_{air}}$$

$$T_{et} = T_{desired}$$

T_{et} =evaporator inlet temperature

As illustrated in this equation, the evaporator capacity is modulated based on the thermal loading on the system.

At block 320 the humidity level within the passenger compartment is measured by a humidity sensor. If the humidity level is too high, irrespective of the interior or exterior conditions, the air within the passenger compartment must be cooled to remove the humidity from the air. A target evaporator discharge temperature of approximately 55° F. is selected, which falls within the normal comfort level, as defined by ASHRAE. When the air is reheated, the air will fall into a comfortable region. In order to determine if the humidity is too high, a humidity ratio must be evaluated. The humidity ratio is evaluated by referring to table 1 below and by measuring the humidity, using the humidity sensor, and the temperature using the temperature sensor, as represented by blocks 320 and 322. The humidity ratio is then evaluated, as represented by block 324. Preferably, table 1 is stored in system memory. The humidity ratio is compared to a target humidity ratio such as approximately 0.009, as represented by block 326. If at a given temperature the relative humidity is greater than the relative humidity shown in the table 1, then the humidity ratio is determined to be greater than the target humidity ratio. The air must then be dehumidified, as represented by block 328. Table 1 below shows the temperature versus humidity values for a humidity ratio of 0.009 kg water/kg air.

TABLE 1

Temperature Vs. Relative Humidity at 0.009 Humidity Ratio	
Temperature	Relative Humidity
54	100
57	90
60	80
64	70
69	60
74	50
81	40
90	30
103	20

If the measured interior air has a humidity ratio above 0.009 kg water/kg air, then the air must be cooled to 55° F. This is due to the fact that the humidity ratio at 55° F. and 100% relative humidity is 0.009 kg water/kg air. The following control logic statement may be used in the control strategy to accomplish this objective:

IF((T_{et})55 F) and (HR)0.009)) T_{et} =55° F.

Finally, the control strategy determines if fogging is probable, as represented by 332. If fogging is likely, the compressor will be operated to produce the lowest evaporator discharge temperature possible to remove or dilute the moisture in the air, as represented by blocks 332 and 334. The following control logic statement may be used to accomplish this objective:

IF(Fogging Probability=High) T_{et} =35° F.

Fogging occurs when the humidity in the vehicle is high enough that water condenses on the interior of the car. The strategy returns to the main program at block 336.

Having decided upon the target evaporator outlet temperature, the strategy returns to FIG. 3. The next step is to determine the output current for the compressor, as represented by block 218. The control current/depends on current control setting for the compressor and the difference between the actual evaporator outlet temperature (T_{et}) and the real evaporator temperature ($T_{evapout}$). The following closed loop control logic may be used:

$$\Delta T = T_{et} - T_{evapout}$$

$$I_{t+1} = I_t + I_{max} \cdot K \cdot \frac{\Delta T}{10}$$

where.

$$I_{t+1} \leq I_{max}$$

$$\Delta T \leq 10$$

As any person skilled in the art of electronic control automotive air conditioning compressors will recognize from the previous detailed description and from the figures and claims, modifications and changes can be made to the preferred embodiments of the invention without departing from the scope of this invention defined in the following claims.

What is claimed is:

1. A method for controlling a vehicle air-conditioning system for cooling an interior of a vehicle, wherein the vehicle air conditioning system has a compressor coupled to an electronic control valve, the method comprising:
 - reading a user manipulateable switch;
 - determining a desired vehicle interior temperature based on the read user manipulateable switch;
 - reading a plurality of sensors having output signals indicative of an interior and an exterior climate of the vehicle;
 - determining a heat load on the vehicle air conditioning system based on the reading of the plurality of sensors having output signals indicative of the interior and the exterior climate of the vehicle;
 - determining a desired evaporator discharge temperature based on the determined heat load and the determined desired vehicle interior temperature and setting the desired evaporator discharge temperature to the lower of a driver and a passenger desired temperature;
 - evaluating a humidity level inside the vehicle by reading at least one of the plurality of sensors having at least one output signal indicative of the interior and the exterior climate of the vehicle;
 - determining a humidity ratio based on the evaluated humidity level;
 - determining whether fogging will occur inside the vehicle based on the determined humidity ratio; and
 - modifying the desired evaporation temperature if fogging is determined to occur.
2. The method of claim 1 wherein reading a user manipulateable switch further comprises reading a vehicle ignition switch.
3. The method of claim 1 wherein reading a plurality of sensors further comprises reading an inside air temperature sensor.
4. The method of claim 1 wherein determining a desired evaporator discharge temperature further comprises reading a user manipulateable temperature setting switch.

5. The method of claim 1 wherein determining a desired evaporator discharge temperature further comprises determining whether the vehicle air-conditioning system is in a defrost mode.

6. The method of claim 1 wherein determining a desired evaporator discharge temperature further comprises determining whether the vehicle air-conditioning system is set to a maximum cooling mode.

7. The method of claim 1 wherein determining a desired evaporator discharge temperature further comprises determining whether the vehicle air-conditioning system is set to a maximum heating mode.

8. The method of claim 1 wherein evaluating a humidity level further comprises reading a temperature and a relative humid inside the vehicle to evaluate whether a humidity ratio is greater than a target humidity ratio.

9. A method for controlling a vehicle air-conditioning system for cooling or heating an interior of a vehicle, wherein the vehicle air conditioning system has a compressor coupled to an electronic control valve, the method comprising:

- reading a user manipulateable switch;
- determining a desired vehicle interior temperature based on the read user manipulateable switch;
- reading a plurality of sensors having output signals indicative of an interior and an exterior climate of the vehicle;
- determining a heat load on the vehicle air conditioning system based on the reading of the plurality of sensors having output signals indicative of the interior and the exterior climate of the vehicle;
- determining a desired evaporator discharge temperature based on the determined heat load and the determined desired vehicle interior temperature;
- evaluating a humidity level inside the vehicle by reading at least one of the plurality of sensors having at least

one output signal indicative of the interior and the exterior climate of the vehicle;

determining a humidity ratio based on the evaluated humidity level:

comparing the humidity ratio to a target humidity ratio wherein the target humidity ratio is approximately 0.009 kg water/kg air;

determining whether fogging will occur inside the vehicle based on the comparison of the humidity ratio to a target humidity ratio; and

modifying the desired evaporation temperature if fogging is determined to occur.

10. The method of claim 9 wherein reading a user manipulatable switch further comprises reading a vehicle ignition switch.

11. The method of claim 9 wherein reading a plurality of sensors further comprises reading an inside air temperature sensor.

12. The method of claim 9 wherein determining a desired evaporator discharge temperature further comprises reading a user manipulatable temperature setting switch.

13. The method of claim 9 wherein determining a desired evaporator discharge temperature further comprises determining whether the vehicle air-conditioning system is in a defrost mode.

14. The method of claim 9 wherein determining a desired evaporator discharge temperature further comprises determining whether the vehicle air-conditioning system is set to a maximum cooling mode.

15. The method of claim 9 wherein determining a desired evaporator discharge temperature further comprises determining whether the vehicle air-conditioning system is set to a maximum heating mode.

* * * * *

UNITED STATES PATENT AND TRADEMARK OFFICE
CERTIFICATE OF CORRECTION

PATENT NO. : 6,675,592 B2
DATED : January 13, 2004
INVENTOR(S) : Yong Huang et al.

Page 1 of 1

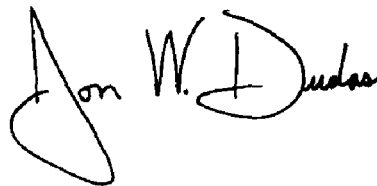
It is certified that error appears in the above-identified patent and that said Letters Patent is hereby corrected as shown below:

Column 9,

Line 3, delete "humid" and substitute -- humidity -- in its place.

Signed and Sealed this

First Day of June, 2004

A handwritten signature in black ink that reads "Jon W. Dudas". The signature is written in a cursive style with a large, looped initial "J".

JON W. DUDAS
Acting Director of the United States Patent and Trademark Office